



# Studio Display

## Apple Recycler Guide

March 2022

# Contents

- 3 [About This Guide](#)
- 4 [Identification](#)
- 5 [Directive 2012/19/EU Annex VII Components](#)
- 6 [Safety Considerations](#)
- 7 [Recommended Tools](#)
- 8 [Disassembly Instructions](#)
- 34 [Material Categorization of Output Fractions](#)

# About This Guide

Apple Recycler Guides provide guidance for electronics recyclers on how to disassemble products to maximize recovery of resources. The guides provide step-by-step disassembly instructions and information on the material composition to help recyclers direct fractions to the appropriate material recycler.

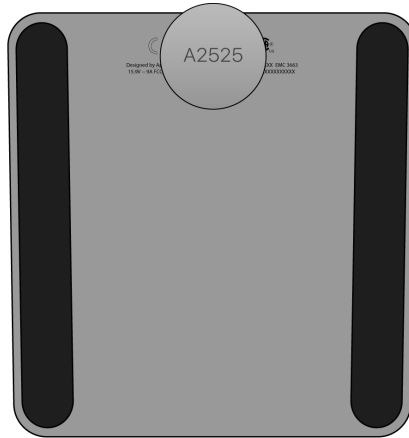
To conserve important resources, we work to reduce the materials we use and aim to one day source only recycled or renewable materials in our products. A key path to reaching that goal is resource recovery from end-of-life electronics.

Disassembly procedures are intended to be performed only by trained electronics recycling professionals. The recycler is responsible for independently evaluating and ensuring compliance with all applicable environmental, health, and safety laws related to the work. These include but are not limited to laws relating to the management, handling, shipping, and disposal of the outputs of this work as waste and laws in place to ensure the health and safety of all employees who support this work.

For questions or feedback about this guide, email [contactesci@apple.com](mailto:contactesci@apple.com).

# Identification

You can find the model number of the display on the bottom of the display stand. To view the model number, hold the sides of the display and gently lay the display face down on a soft, clean towel or cloth.



*Model number:*  
A2525

# Directive 2012/19/EU Annex VII Components

Directive 2012/19/EU Annex VII requirements apply to the following substances and components.

Substance/Component	Location	Removal Instructions
Printed circuit board if the surface is greater than 10 square centimeters	Display logic board, connector logic board, light-emitting diode (LED) logic board, power supply logic board, main logic board	Follow steps 1–24
Cover glass and liquid crystal display (LCD) cell if the surface is greater than 100 square centimeters	Cover glass and LCD cell	Follow step 1–15
External electric cables	USB-C cable and power cord	Follow step 1
No further substances or components as listed in Annex VII		

# Safety Considerations

The recycler is responsible for independently evaluating all activities undertaken by its employees to perform or support the work and ensuring compliance with all applicable health and safety laws related to the work. These include but are not limited to laws relating to the health and safety of all employees who perform or support this work. The recycler is also responsible for evaluating the workspace and ensuring that the area in which the work is to be undertaken is designed using ergonomic best practices and meets all ergonomic requirements to ensure the protection of its employees.

## Personal Protective Equipment

Personal protective equipment should be worn during the entire recycling process.



Wear hand protection



Wear protective clothing



Wear eye protection



Wear foot protection



Wear a mask

## LED Safety

Broken LEDs must be handled properly to ensure the safety of your employees and mitigate any hazards. Package broken LEDs in an appropriate container to properly manage the hazards associated with the materials and store only with compatible materials. All waste must be properly classified, packaged, and labeled in accordance with all relevant laws and regulations.

## Hazard Warnings



Broken glass hazard



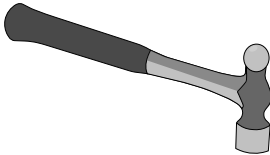
Chemical inhalation hazard



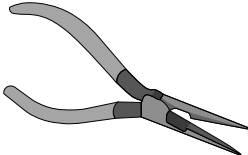
Chemical exposure hazard

# Recommended Tools

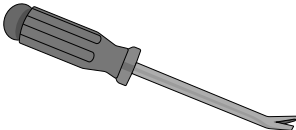
Hammer



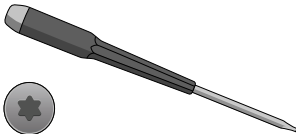
Long-nose pliers



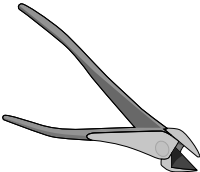
Nail-pulling screwdriver



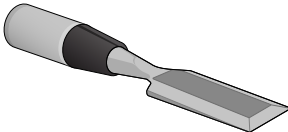
Torx® T20 screwdriver



Wire cutters



Wood chisel



# Disassembly Instructions

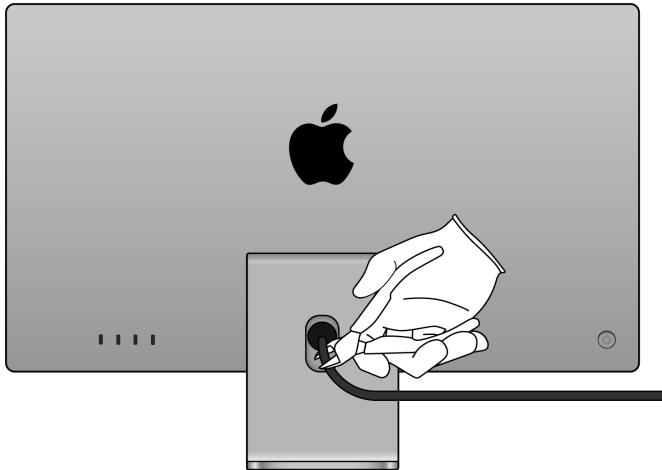
## 1. Remove the cables.

» Turn off the display.



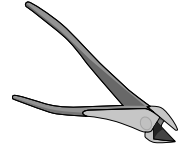
» Unplug the USB-C cable.

» Cut off the power cable from the back of the display.



**Warning:** Before starting disassembly, wait 10 minutes after unplugging the device for stored energy to discharge.

### Tools Used



### Fraction



USB-C cable

Cu

Copper

### Fraction



Power cable

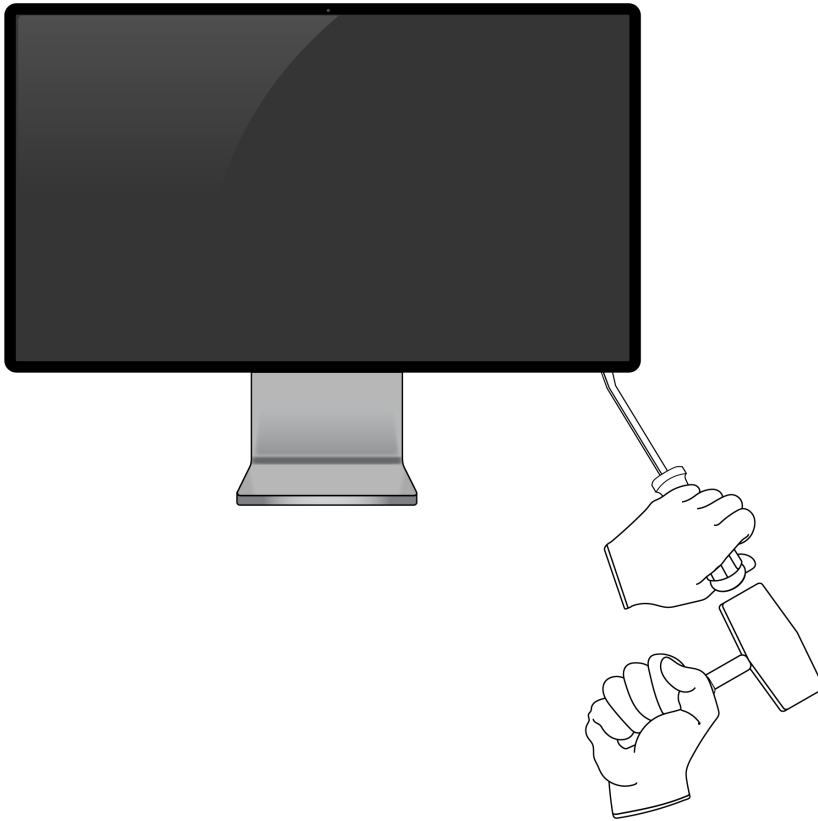
Cu

Copper

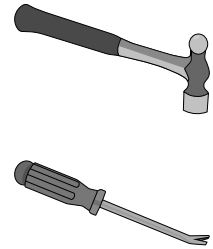


## 2. Remove the display.

» *Pry in between the cover glass and aluminum enclosure.*



### Tools Used



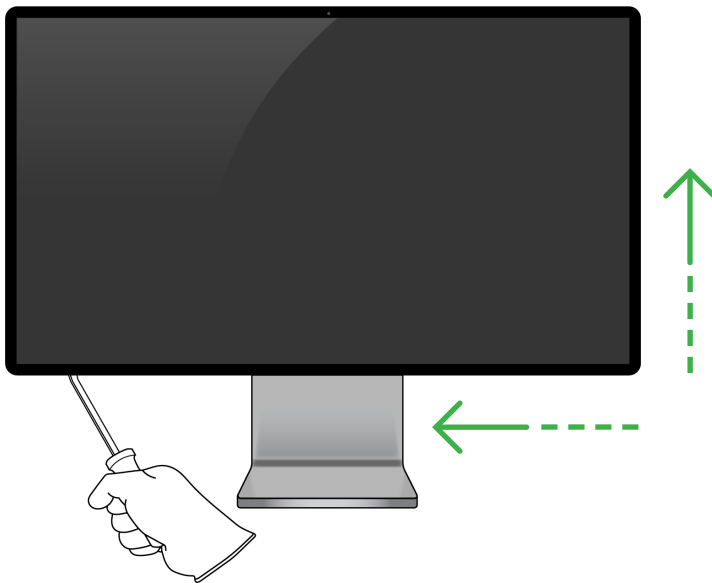
» Once under the display, slide the nail-pulling screwdriver along the right vertical edge and then along the bottom horizontal edge.



Broken glass hazard

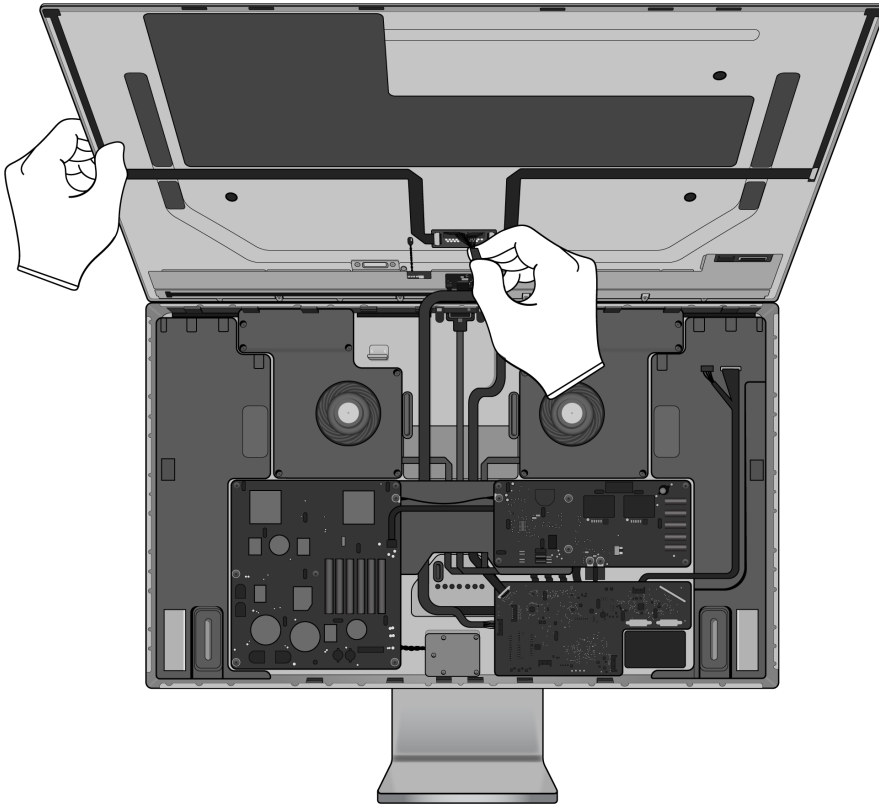


Chemical exposure hazard

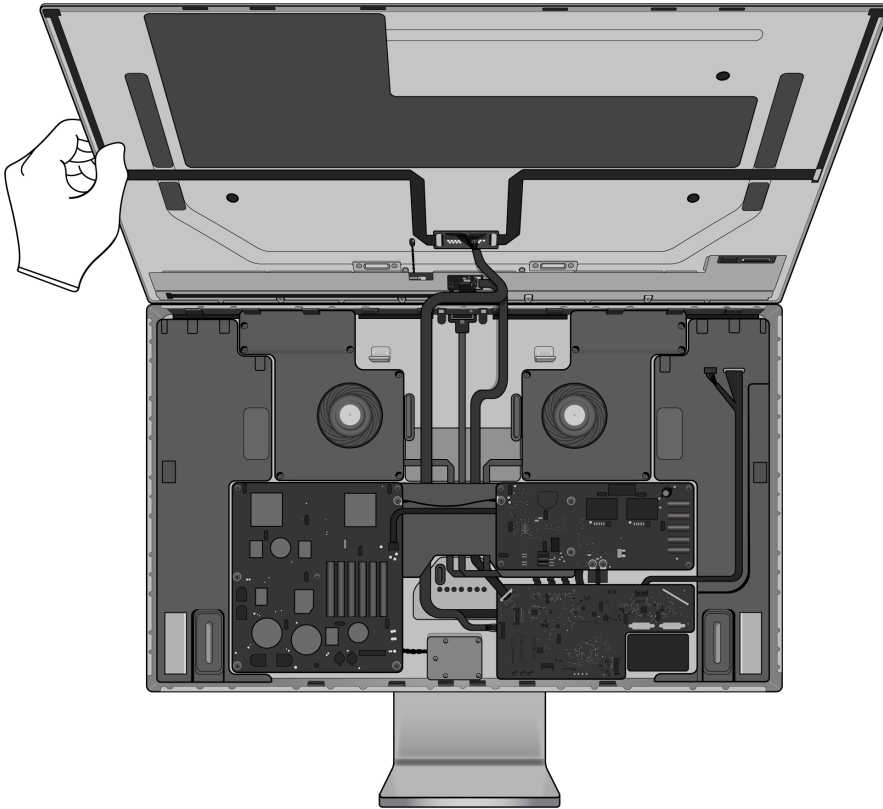


### 3. Separate the display and enclosure.

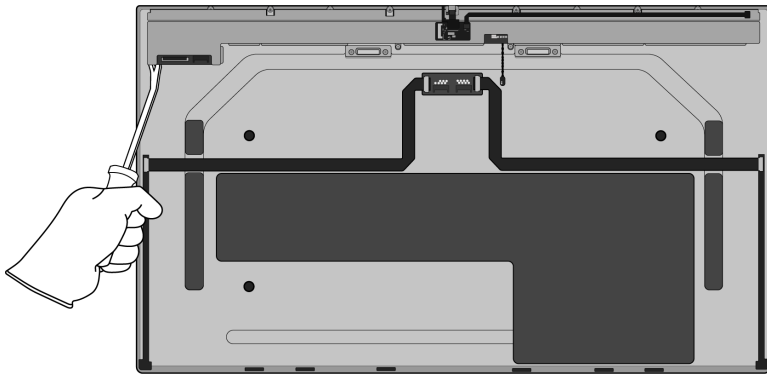
» *Lift up the display from the enclosure.*



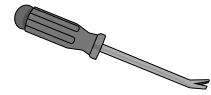
» *Unplug the ribbon cables by hand. Set the enclosure aside.*



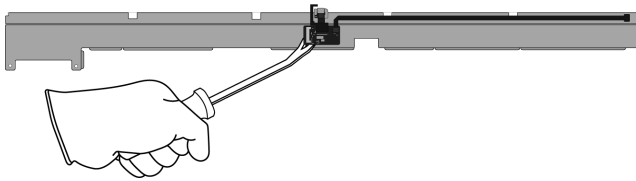
4. Pry off the display logic board cover. Set the display aside.



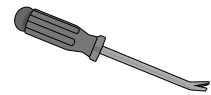
Tools Used



5. On the back side of the display logic board cover, pry off the camera logic board and ribbon cable.



Tools Used



Fraction



Camera logic board  
with ribbon cable

PMs  
Precious  
Metals

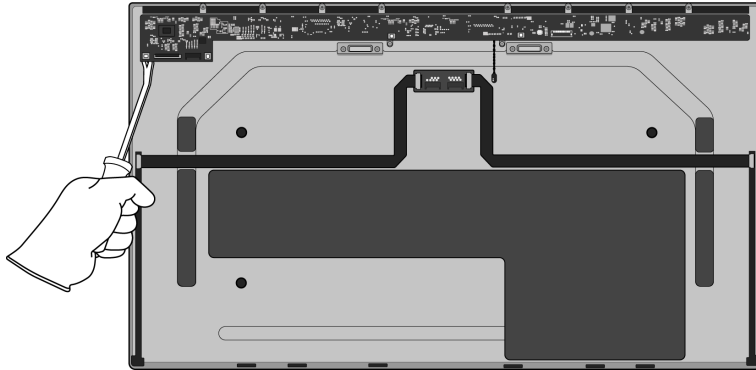
Fraction



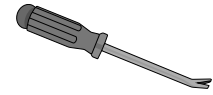
Logic board cover

Fe  
Ferrous

6. On the display, pry off the display logic board.



Tools Used



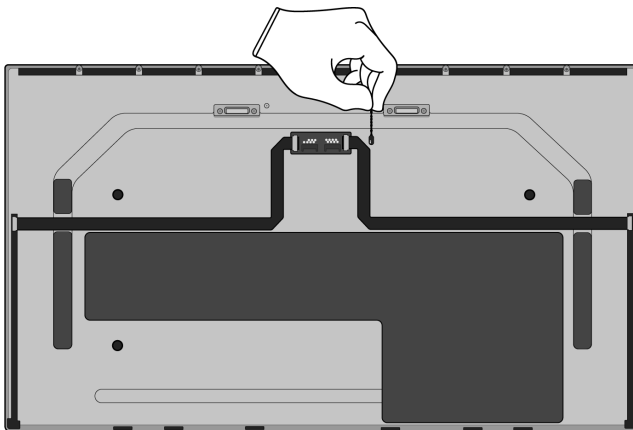
Fraction



Display logic board

PMs  
Precious Metals

7. Pull off the flex cable and the two ribbon cables by hand.



Fraction



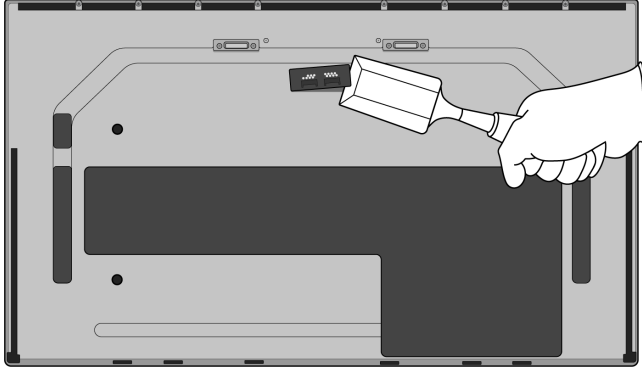
Flex cable



Ribbon cables

Cu  
Copper

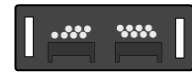
## 8. Pry off the connector logic board.



### Tools Used



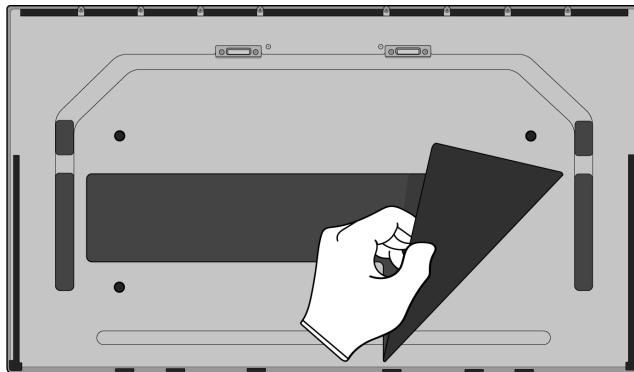
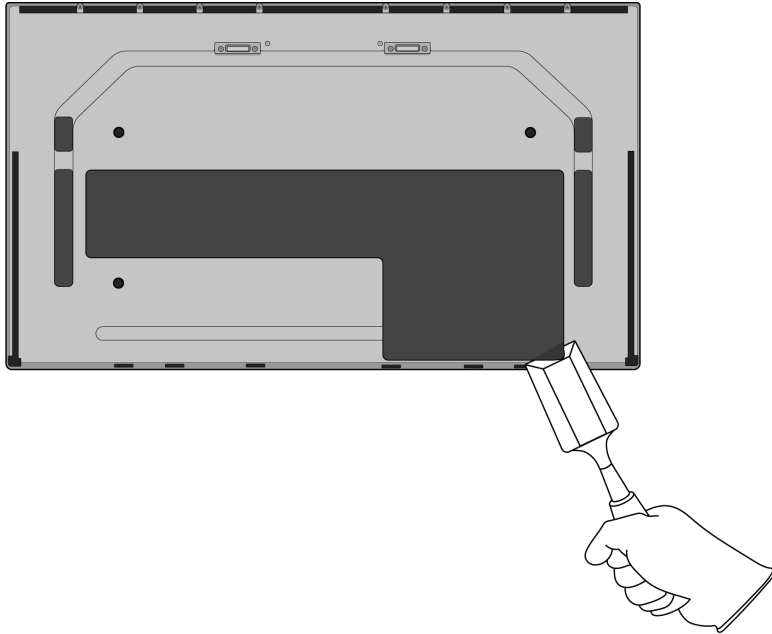
### Fraction



Connector  
logic board



9. Pry up the edge of the plastic sheet. Remove it by hand.



Tools Used



Fraction

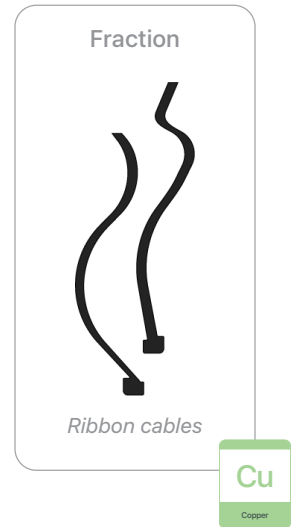
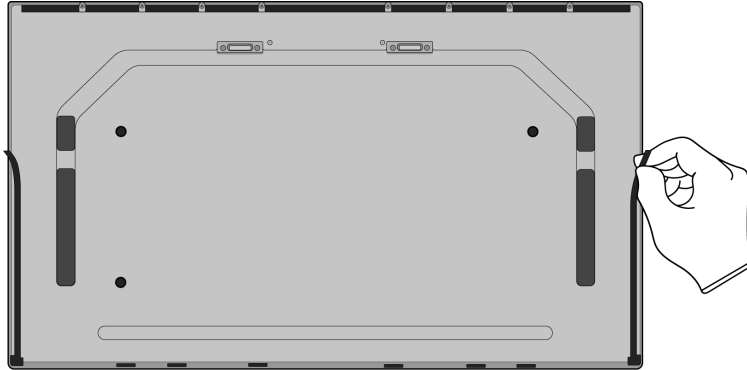


Plastic sheet



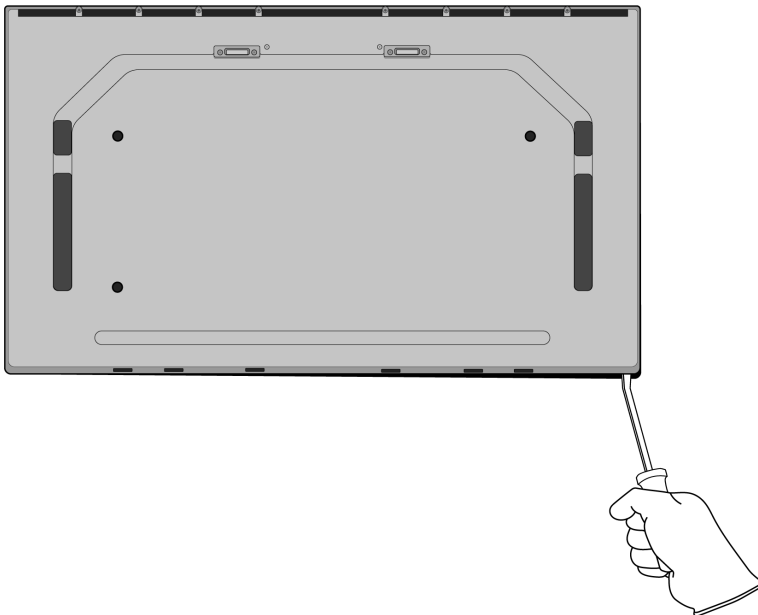


**10.** Peel off the two remaining ribbon cables by hand.

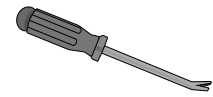


## 11. Remove the display cover.

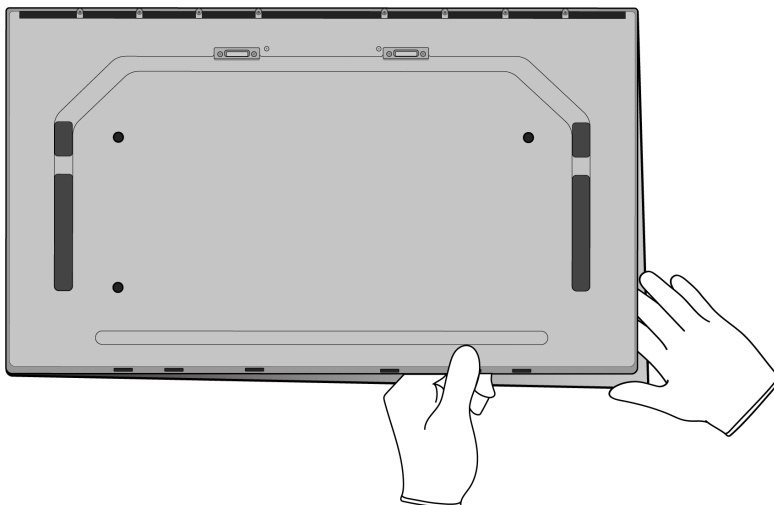
» *Pry up the corner of the display cover.*



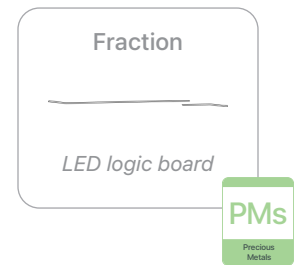
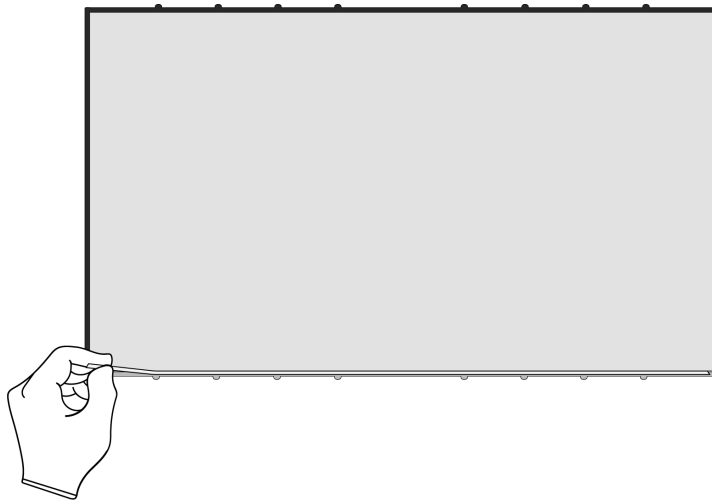
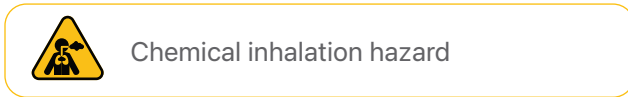
### Tools Used



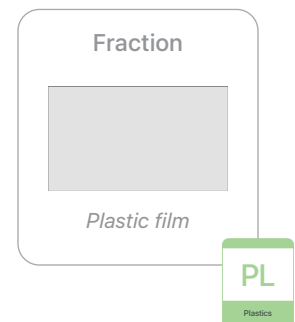
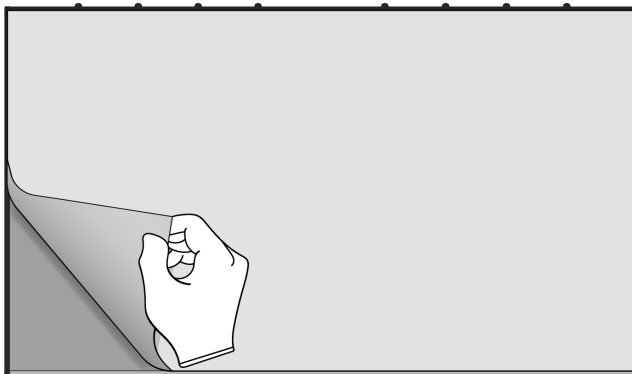
» *Lift off the display cover by hand. Set the LCD cell aside.*



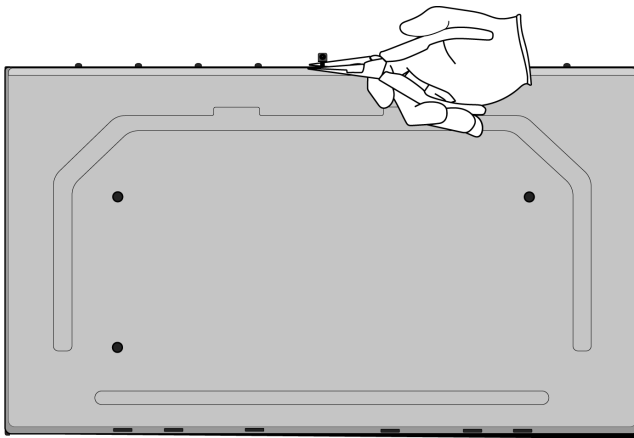
- 12.** Turn the display cover over and remove the LED logic board by hand.



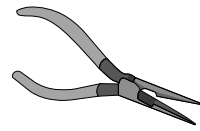
- 13.** Pull the plastic film off the display cover by hand.



# 14. Pull the camera off the display cover.



## Tools Used



## Fraction



Camera

PMs

Precious Metals

## Fraction

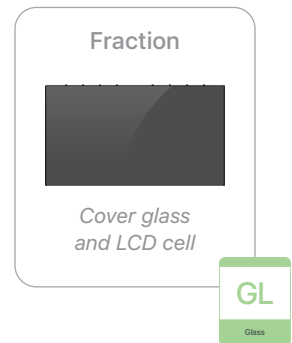
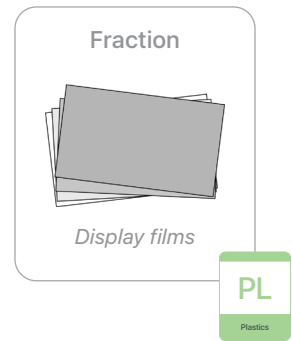
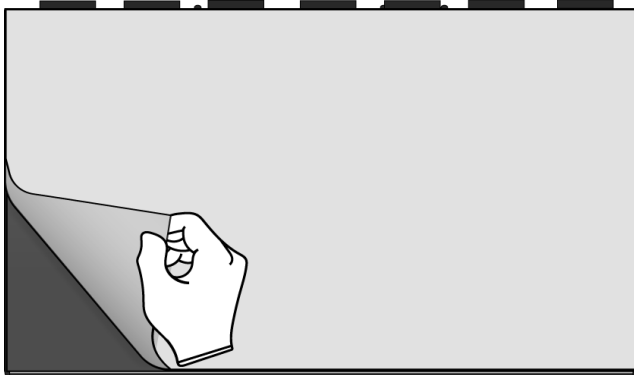


Display cover

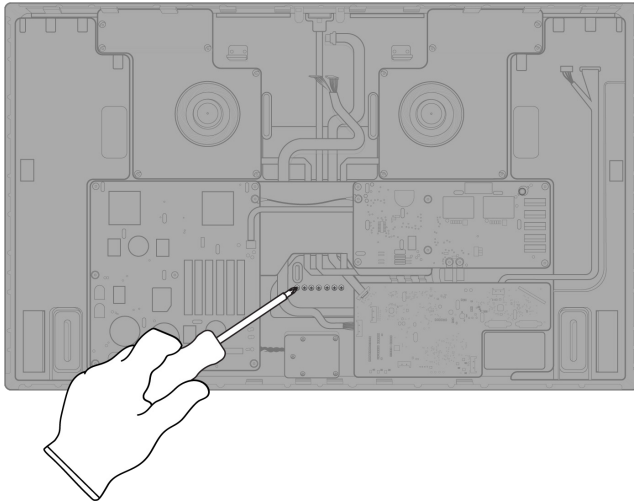
Al

Aluminum

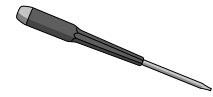
**15.** On the LCD cell, lift off the display films by hand.



- 16.** On the enclosure, remove the seven Torx T20 fasteners from the stand bracket. Lift the enclosure from the stand.



Tools Used



Fraction

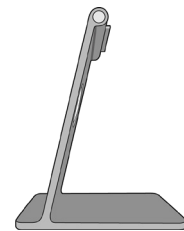


Fasteners (x7)

Fe

Ferrous

Fraction

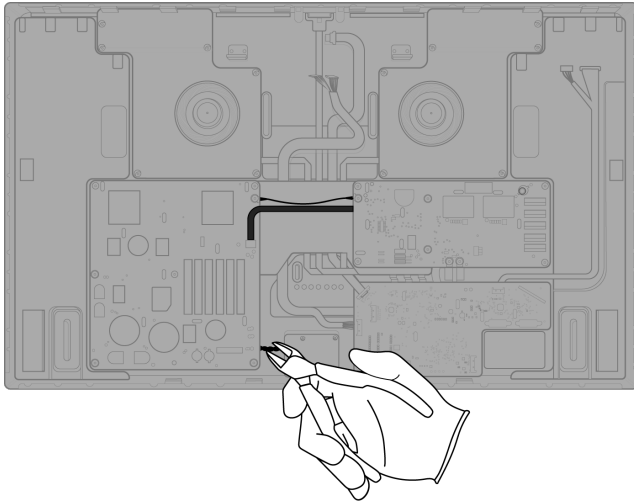


Stand

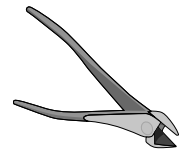
Al

Aluminum

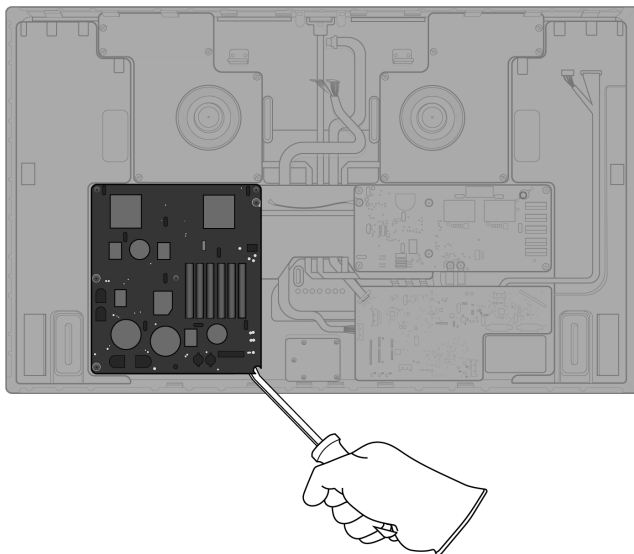
- 17.** Cut off the three cables from the power supply logic board.



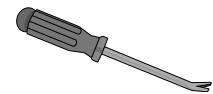
Tools Used



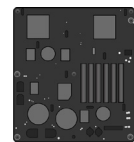
- 18.** Pry off the left power supply logic board.



Tools Used



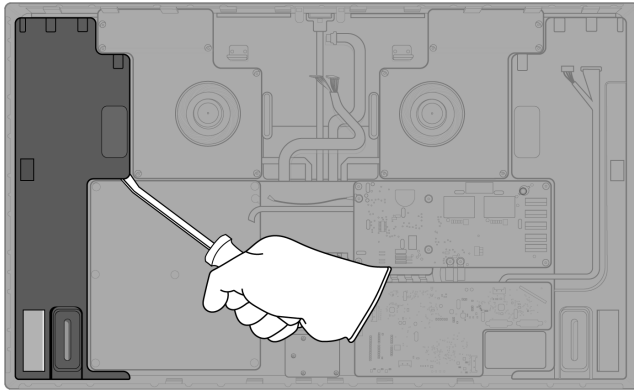
Fraction



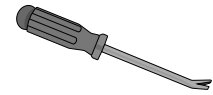
Left power supply logic board



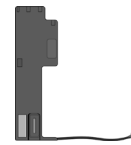
- 19.** Pry off the left speaker. Unplug the cable going back to the main logic board by hand.



Tools Used



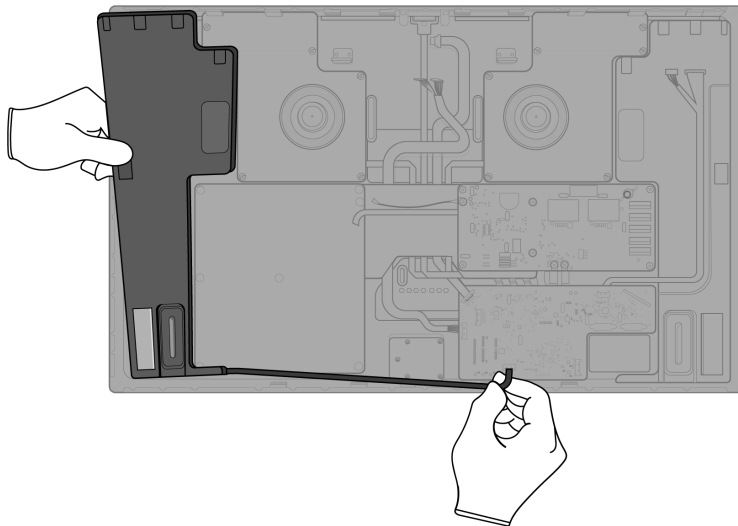
Fraction



Left speaker

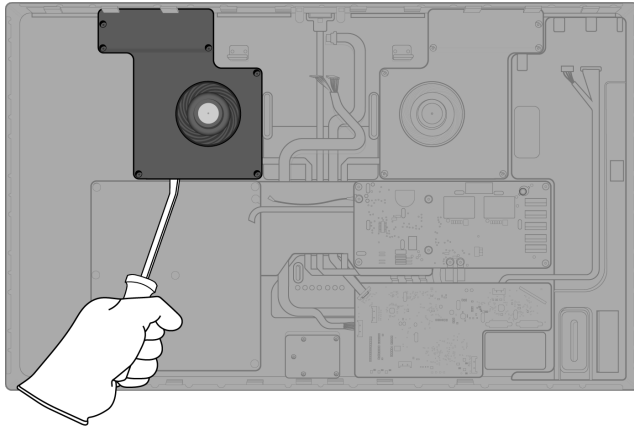
REE

Rare Earth  
Elements

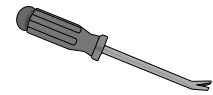




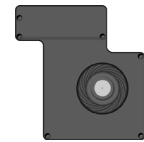
## 20. Pry off the left fan.



### Tools Used



### Fraction

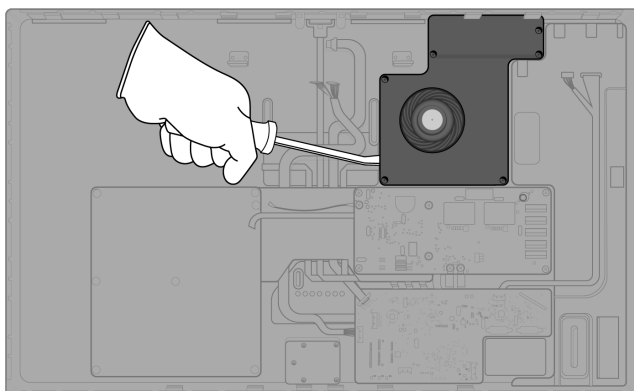


*Left fan*

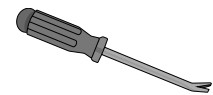
Cu

Copper

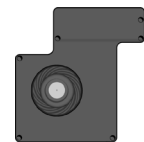
## 21. Pry off the right fan.



### Tools Used



### Fraction

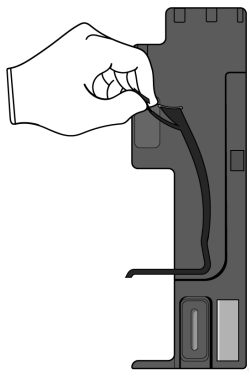
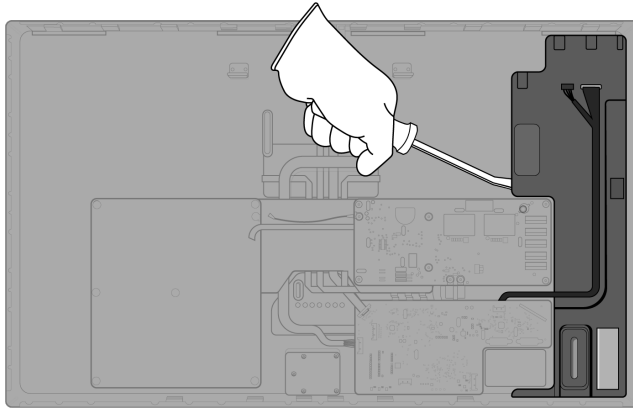


*Right fan*

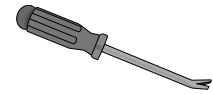
Cu

Copper

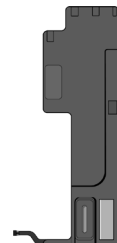
22. Pry off the right speaker. Remove the attached ribbon cables by hand.



Tools Used



Fraction



Right speaker

REE  
Rare Earth  
Elements

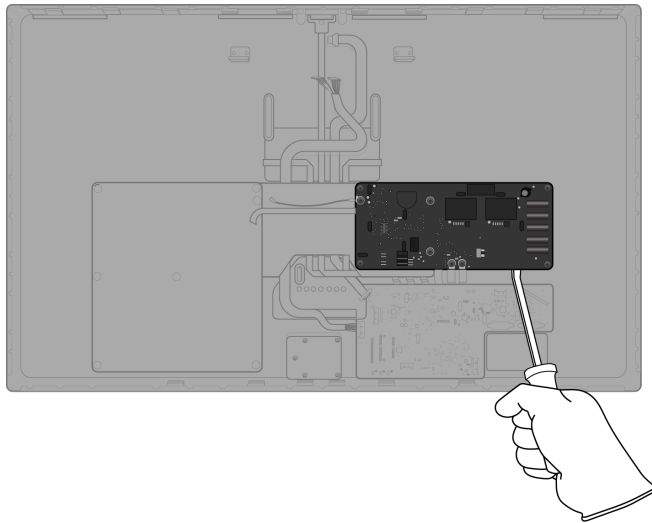
Fraction



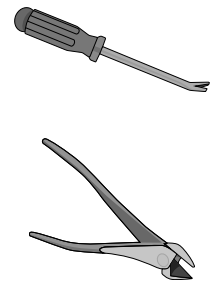
Ribbon cables

Cu  
Copper

- 23.** Pry off the right power supply logic board. Cut the two cables attached to the main logic board.



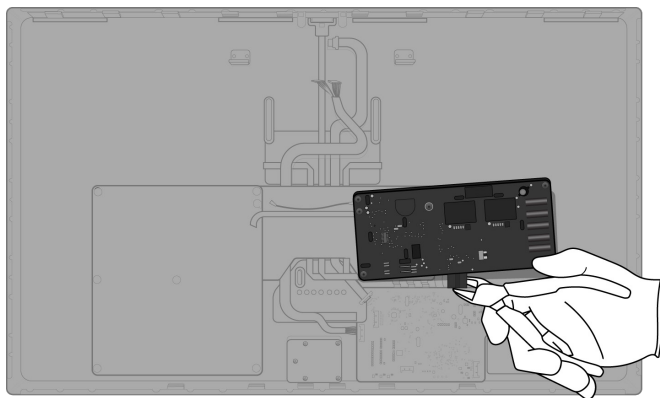
Tools Used



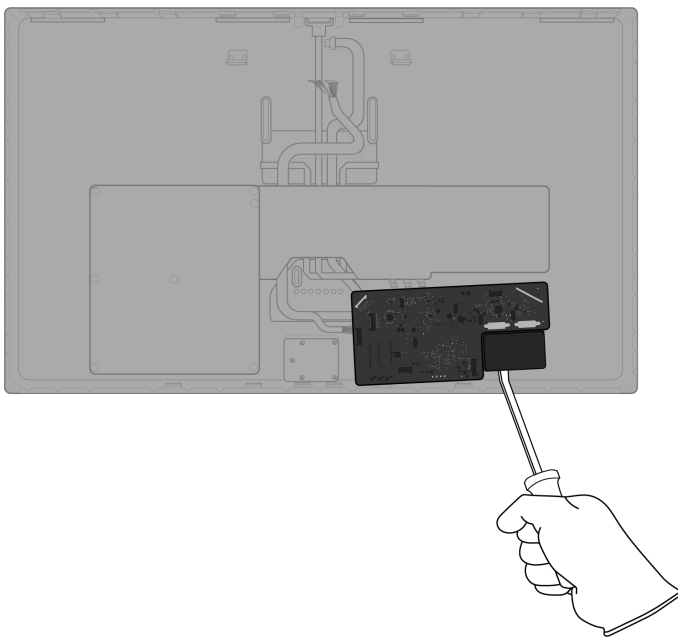
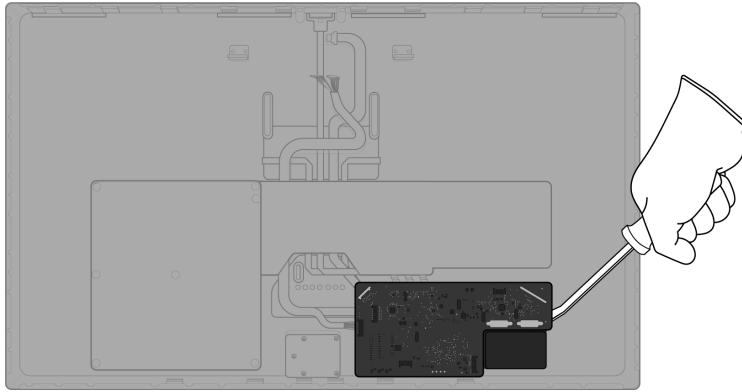
Fraction



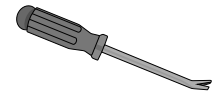
*Right power supply  
logic board*



**24.** Pry off the main logic board with attached Thunderbolt port and USB-C ports.



Tools Used



Fraction

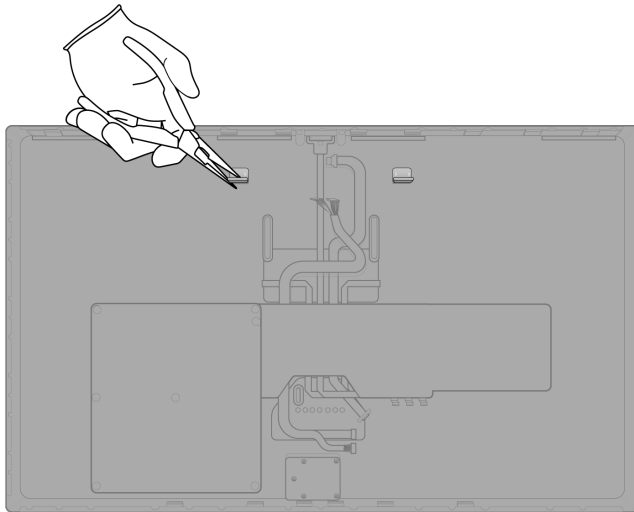


Main logic board  
and ports

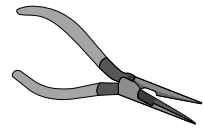
PMs

Precious  
Metals

**25.** Remove the two display mounting tabs.



Tools Used



Fraction

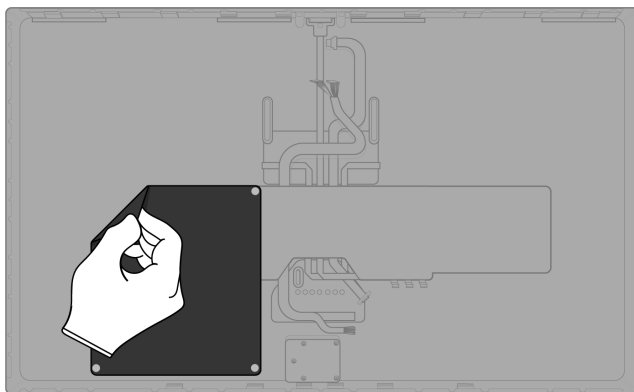


Display mounting tabs

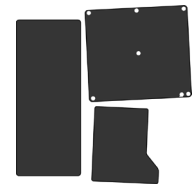
Fe

Ferrous

**26.** Remove the three plastic sheets by hand.



Fraction

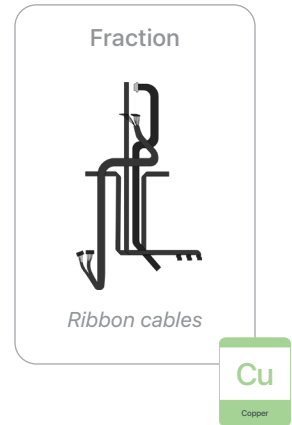
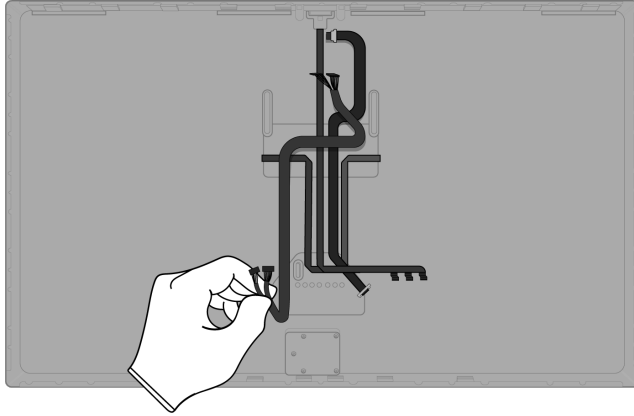


Plastic sheets

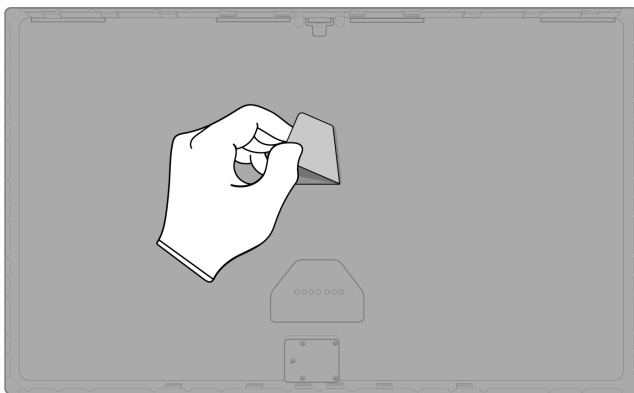
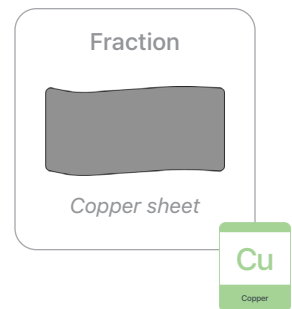
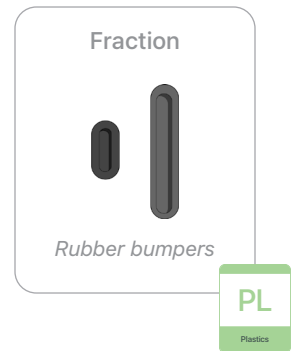
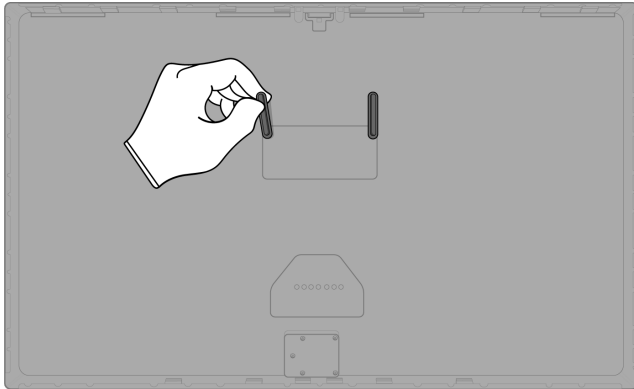
PL

Plastics

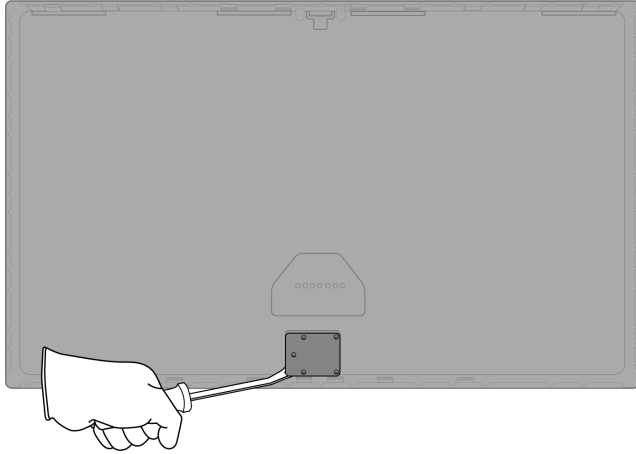
**27.** Pull off the remaining ribbon cables by hand.



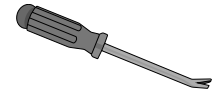
**28.** Pull off the two rubber bumpers and the copper sheet by hand.



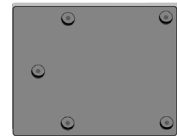
**29.** Pry off the power adapter.



Tools Used



Fraction

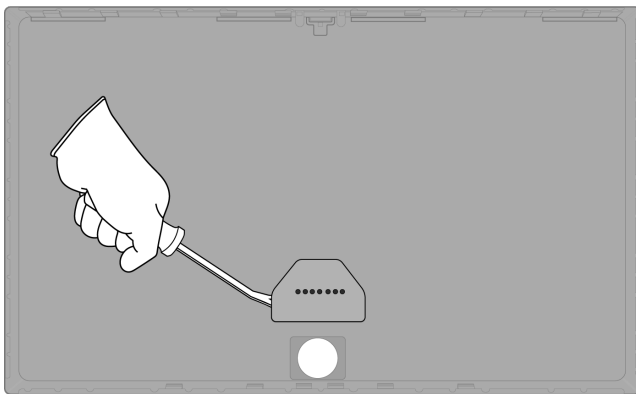


Power adapter

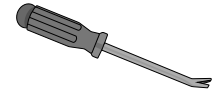
Cu

Copper

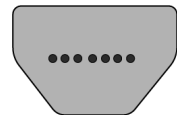
**30.** Pry off the stand bracket.



Tools Used



Fraction



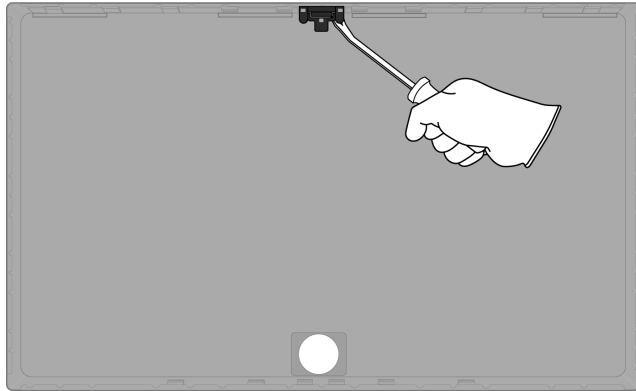
Stand bracket

Fe

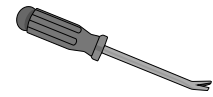
Ferrous



### 31. Pry off the microphone array.



#### Tools Used



#### Fraction

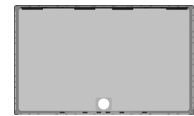


Microphone array

Cu

Copper

#### Fraction



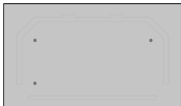
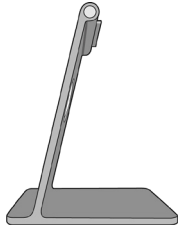




Enclosure

Al

Aluminum

# Material Categorization of Output Fractions

All outputs from this process must be managed, handled, and disposed of in accordance with applicable waste laws and regulations, including but not limited to the Waste Framework Directive and its national enactments in Europe.

Fraction	Downstream Processing
<p data-bbox="435 604 570 632"><b>Aluminum</b></p>  <p data-bbox="435 800 570 827"><i>Display cover</i></p>  <p data-bbox="435 1108 532 1136"><i>Stand</i></p>  <p data-bbox="435 1308 548 1335"><i>Enclosure</i></p>	<p data-bbox="964 604 1276 632"><b>Primary Target Material</b></p>  <p data-bbox="922 831 1315 858"><b>Potential Additional Materials</b></p>  

**Fraction**

**Downstream Processing**

**Ferrous**

**Primary Target Material**



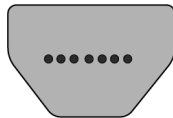
*Logic board cover*



*Fasteners*



*Display mounting tabs*



*Stand bracket*

**Glass**

**Primary Target Material**



*Cover glass and LCD cell*



**Potential Additional Materials**



## Fraction

## Downstream Processing

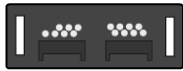
### Logic Boards



Camera logic board with ribbon cable



Display logic board



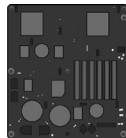
Connector logic board



LED logic board



Camera



Left power supply logic board



Right power supply logic board



Main logic board and ports

### Primary Target Material



### Potential Additional Materials



**Fraction**

**Downstream Processing**

**Mixed Electronics**



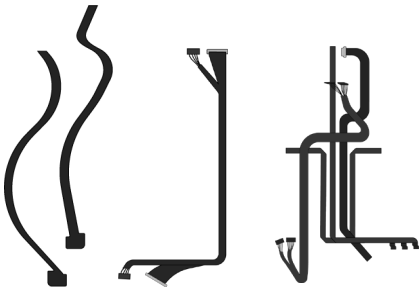
*USB-C cable*



*Power cable*



*Flex cable*



*Ribbon cables*

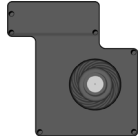
**Primary Target Material**



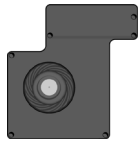
**Potential Additional Materials**



Mixed Electronics (cont.)



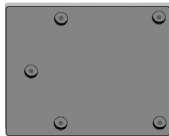
*Left fan*



*Right fan*



*Copper sheet*



*Power adapter*

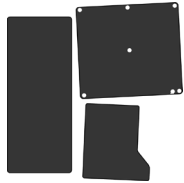


*Microphone array*

**Fraction**

**Downstream Processing**

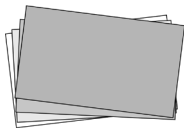
**Mixed Plastics**



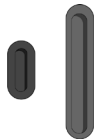
*Plastic sheets*



*Plastic film*



*Display films*



*Rubber bumpers*

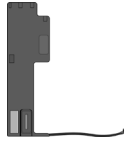
**Primary Target Material**



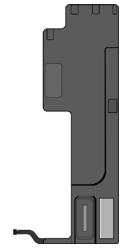
**Fraction**

**Downstream Processing**

**Rare Earth Magnets**



*Left speaker*



*Right speaker*

**Primary Target Material**



**Potential Additional Materials**

